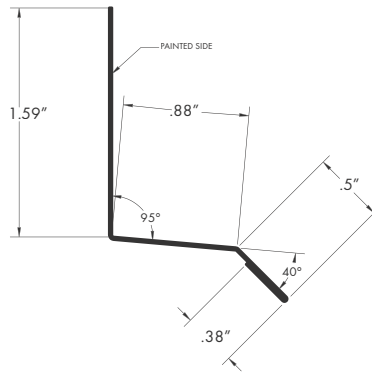
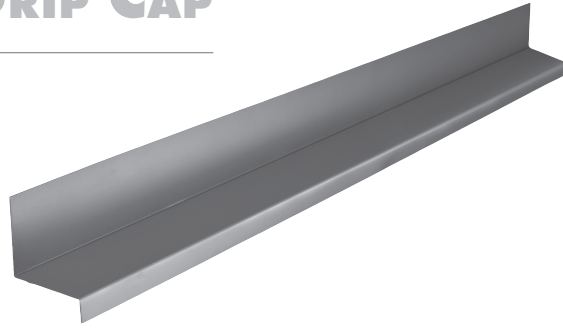


TRUCEDAR® DRIP CAP

STEEL

PREMIUM



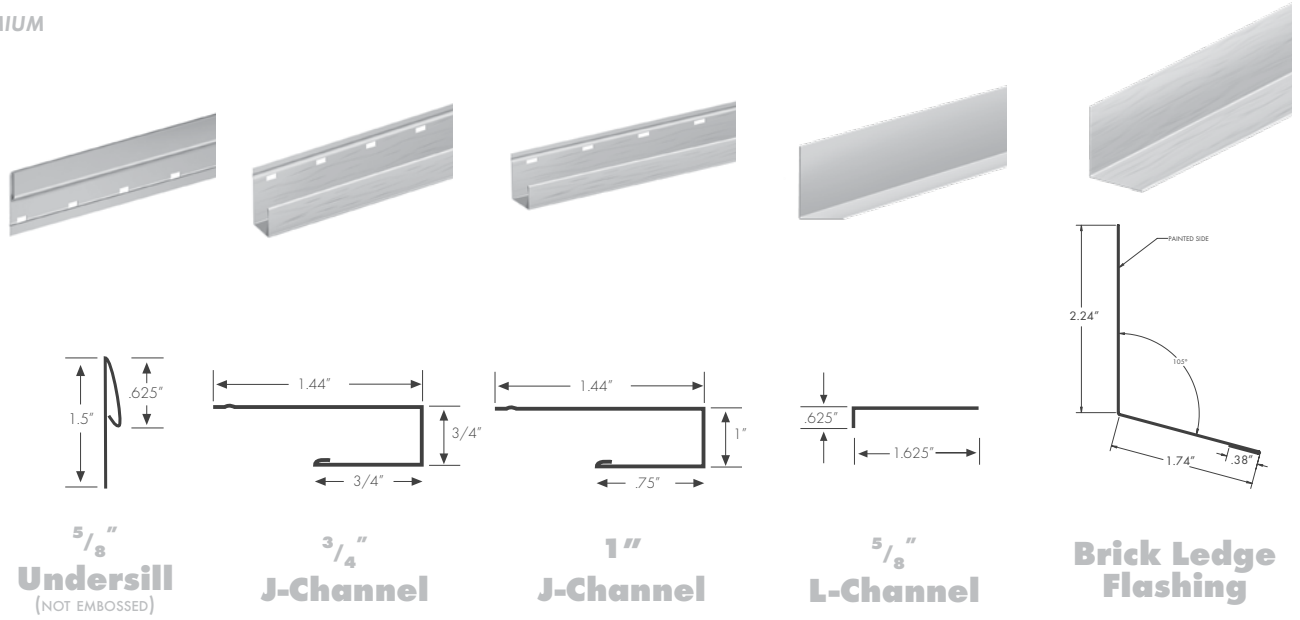
Thickness	.016
Finish	Sunmaster 50®
SKU	TCSDC_
HD Colors	
Birch 417	•
Captiva M12	•
Cedar 109	•
Cider Mill M16	•
English Saddle M17	•
Mountain Laurel M18	•
Napa Vine M15	•
Spruce 416	•
Timber Ash 106	•
Weathered Wood 108	•
Solid Colors	
Bennington Beige 401	•
Cottage Red 411	•
Dune 404	•
Foothill Blue 405	•
Gray Dusk 415	•
Ironstone 414	•
Norwood 509	•
Pewter 805	•
Sahara 407	•
Statuary Bronze 425	•
Sycamore 409	•
Thatch 410	•
White 280	•

20 pc./10' carton

TRUCEDAR® SIDING ACCESSORIES

STEEL

PREMIUM



Thickness	.016				
Finish	Sunmaster50®				
SKU	UTS & UTSHD2	J75S & J75SHD2	J1S & J1SHD2	L58S & L58SHD2	BLF & BLFHD2
HD Colors					
Birch 417	•	•	•	•	•
Captiva M12	•	•	•	•	•
Cedar 109	•	•	•	•	•
Cider Mill M16	•	•	•	•	•
English Saddle M17	•	•	•	•	•
Mountain Laurel M18	•	•	•	•	•
Napa Vine M15	•	•	•	•	•
Spruce 416	•	•	•	•	•
Timber Ash 106	•	•	•	•	•
Weathered Wood 108	•	•	•	•	•
Solid Colors					
Bennington Beige 401	•	•	•	•	•
Cottage Red 411	•	•	•	•	•
Dune 404	•	•	•	•	•
Foothill Blue 405	•	•	•	•	•
Gray Dusk 415	•	•	•	•	•
Ironstone 414	•	•	•	•	•
Norwood 509	•	•	•	•	•
Pewter 805	•	•	•	•	•
Sahara 407	•	•	•	•	•
Statuary Bronze 425	•	•	•	•	•
Sycamore 409	•	•	•	•	•
Thatch 410	•	•	•	•	•
White 280	•	•	•	•	•

25 pc./12'

25 pc./12'
40 carton/pallet
8 pallet/truck

25 pc./10'
40 carton/pallet
8 pallet/truck

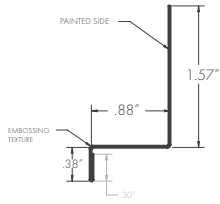
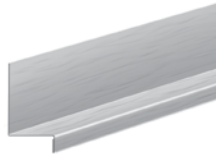
25 pc./10'
40 carton/pallet
8 pallet/truck

10 pc./10'
40 carton/pallet
8 pallet/truck

TRUCEDAR® SIDING ACCESSORIES

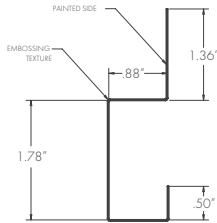
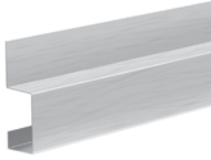
STEEL

PREMIUM



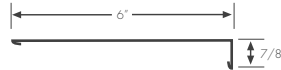
Z-Flashing

(used for Board & Batten)

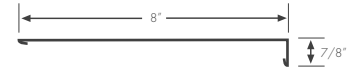


Batten Trim

(used for Board & Batten)



6" Fascia



8" Fascia

Thickness	.016			
Finish	Sunmaster50®			
SKU	BBZT10 & BBZT10HD2	BT10 & BT10HD2	6FSS & 6FSSHD2	8FSS & 8FSSHD2
HD Colors				
Birch 417	•	•	•	•
Captiva M12	•	•	•	•
Cedar 109	•	•	•	•
Cider Mill M16	•	•	•	•
English Saddle M17	•	•	•	•
Mountain Laurel M18	•	•	•	•
Napa Vine M15	•	•	•	•
Spruce 416	•	•	•	•
Timber Ash 106	•	•	•	•
Weathered Wood 108	•	•	•	•
Solid Colors				
Bennington Beige 401	•	•	•	•
Cottage Red 411	•	•	•	•
Dune 404	•	•	•	•
Foothill Blue 405	•	•	•	•
Gray Dusk 415	•	•	•	•
Ironstone 414	•	•	•	•
Norwood 509	•	•	•	•
Pewter 805	•	•	•	•
Sahara 407	•	•	•	•
Statuary Bronze 425	•	•	•	•
Sycamore 409	•	•	•	•
Thatch 410	•	•	•	•
White 280	•	•	•	•

10 pc./10'
40 carton/pallet
8 pallet/truck

10 pc./10'
30 carton/pallet
8 pallet/truck

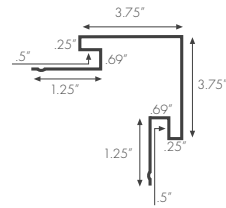
10 pc./12'
30 carton/pallet
8 pallet/truck

10 pc./12'
24 carton/pallet
8 pallet/truck

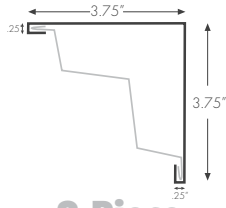
TRUCEDAR® SIDING ACCESSORIES

STEEL

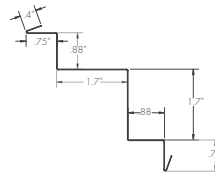
PREMIUM



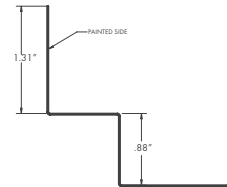
**1-Piece
Outside
Corner Post**



**2-Piece
Outside
Corner Post
CAP**



**2-Piece
Outside
Corner Post
BASE**



**1-Piece
Inside
Corner Block**

Thickness	.016			
Finish	Sunmaster 50®			

SKU	OCPS & OCPSHD2	OCPS2P & OCPS2PHD2	OCPB	ICB & ICBHD
-----	----------------	--------------------	------	-------------

HD Colors

Birch 417	•	•		•
Captiva M12	•	•		•
Cedar 109	•	•		•
Cider Mill M16	•	•		•
English Saddle M17	•	•		•
Mountain Laurel M18	•	•		•
Napa Vine M15	•	•		•
Spruce 416	•	•		•
Timber Ash 106	•	•		•
Weathered Wood 108	•	•		•

Solid Colors

Bennington Beige 401	•	•	* Note: Base will always be black	•
Cottage Red 411	•	•		•
Dune 404	•	•		•
Foothill Blue 405	•	•		•
Gray Dusk 415	•	•		•
Ironstone 414	•	•		•
Norwood 509	•	•		•
Pewter 805	•	•		•
Sahara 407	•	•		•
Statuary Bronze 425	•	•		•
Sycamore 409	•	•		•
Thatch 410	•	•		•
White 280	•	•		•

10 pc./10'
15 carton/pallet
8 pallet/truck

10 pc./10'
15 carton/pallet
8 pallet/truck

10 pc./10'
15 carton/pallet
8 pallet/truck

10 pc./10'

* Works best with
Board & Batten

* Works best with
Board & Batten

TRUCEDAR® SIDING ACCESSORIES

STEEL & OTHER

PREMIUM



14.77" x 30'
Trim Coil
(TRUCEDAR® EMBOSSED)



1.25"
STAINLESS STEEL
(RING SHANK)



Touch-Up
Paint



Tenryu Saw
Blade

Thickness	.016				
Finish	Sunmaster 50®				
SKU	T1430S & T1430SHD2	NSS	PEN_ or BRUSH_	7.25SSB	
HD Colors					
Birch 417	•	* 805	• (B)	<p>Each Blade Features:</p> <ul style="list-style-type: none"> • 48 Teeth • Rugged plates and specially formulated carbide tips with a special tooth grind for fast, clean cuts. • High quality cuts without the clouds of dust and scorch marks associated with friction blades. • Cool cuts that leave the work piece edge free of burrs. • Reduced cost-per-cut and maximized performance for the operator as a result of fewer blade changes. <p>Please note all safety instructions before use and adhere to instructions for maximum RPM speeds.</p>	
Captiva M12	•	* 809	• (B)		
Cedar 109	•	* 407	• (B)		
Cider Mill M16	•		• (B)		
English Saddle M17	•	* 538	• (B)		
Mountain Laurel M18	•	* 559	• (B)		
Napa Vine M15	•	* 807	• (B)		
Spruce 416	•	* 200	• (B)		
Timber Ash 106	•	* 507	• (B)		
Weathered Wood 108	•	* 204	• (B)		
Solid Colors					
Bennington Beige 401	•	•	• (P)		
Cottage Red 411	•	•	• (B)		
Dune 404	•	•	• (P)		
Foothill Blue 405	•	•	• (B)		
Gray Dusk 415	•	* 605	• (B)		
Ironstone 414	•	* 407	• (B)		
Norwood 509	•	•	• (P)		
Pewter 805	•	•	• (P)		
Sahara 407	•	•	• (P)		
Statuary Bronze 425	•	* 507	• (B)		
Sycamore 409	•	•	• (P)		
Thatch 410	•	•	• (P)		
White 280	•	•	• (B)		

* best solid color match for that color
Also available in all 28 System Colors

P) = in pen form
(B) = in brush form

1 roll/30'
32 carton/pallet
26 pallet/truck

1 lb. box

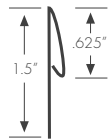
1 pc./carton

1 pc./carton

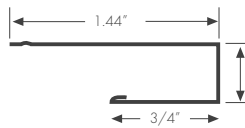
TRUCEDAR® SHAKE SIDEWALL ACCESSORIES

STEEL

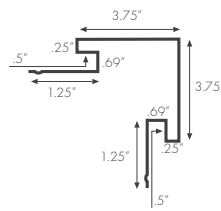
PREMIUM



5/8" UNDERSILL
(NOT EMBOSSED)

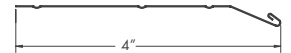


3/4" J-CHANNEL



1-Piece Outside Corner Post

24" x 25' TRIM COIL
(TRUCEDAR® EMBOSSING)



4" SHAKE STARTER

Thickness	.016				.0155
Finish	PVDF Tri-Pigment				Mill Finish
SKU	UTSSHK	J755SHK	OCPSSHK	T25GSHK	4SHKSSGAL
Cedar 109	•	•	•	•	
Timber Ash 106	•	•	•	•	
Weathered Wood 108	•	•	•	•	

25 pc./12'

25 pc./12'
40 carton/pallet
8 pallet/truck

10 pc./10'
15 carton/pallet
8 pallet/truck

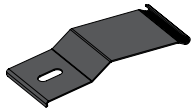
1 pc./carton
25' Length
48 carton/pallet

20 pc./10'
63 carton/pallet
10 pallet/truck

TRUCEDAR® SHAKE SIDEWALL ACCESSORIES

STEEL

PREMIUM



RETENTION CLIP



TOUCH-UP
PAINT BRUSH



SPRAY PAINT



1.25"
STAINLESS STEEL
(RING SHANK)



10-16 x 1 1/4"
MILL SCREW

Thickness	.025	-	-	-	-
Finish	Q800 TuffTech™	PVDF Tri-Pigment	-	-	Mill
SKU	MRC1.25G50 MRC1.25BLK50	BRUSH_	P12_	NSS_	MRS1.25MILL
Cedar 109	G	•	* 407	* 407	
Timber Ash 106	BLK	•	* 507	* 507	
Weathered Wood 108	G	•	* 204	* 204	

US Patent No.:
9,097,019
9,181,703
9,181,702
9,181,703
Canadian Patent Pending

* best solid color match for that color

* best solid color match for that color

use for coordinating accessories,
not panel touch-up.

not for use on shake sidewall
panels, but for coordinating with
after market accessories.

50 pcs

1 pc./carton
1 oz.

1 pc./carton

1 lb. box

1,000 pc./carton
(bulk packed)