

TRUVENT

HIDDEN VENT SOFFIT



HIDDEN

BRILLIANCE



TRUVENT HIDDEN VENT SOFFIT IN SILVER LINING



TRUVENT® HIDDEN VENT SOFFIT

Engineered without compromise, TruVent® Hidden Vent Soffit gives you premium style without sacrificing performance. The carefully designed aluminum soffit offers the ideal strength-to-weight ratio, creating the crisp, clean design of the angled vent system. The result is beautiful—and a breeze to install.



THE PATENTED ANGLE SLOT
DESIGN HIDES VENT HOLES, WHILE
PROVIDING ADDITIONAL STIFFNESS.

THE TRAPEZOIDAL
CROSS SECTIONAL SHAPE
MAXIMIZES RIGIDITY.

THE UNIQUE I-BEAM
CONSTRUCTION IS ENGINEERED
FOR OPTIMUM STRENGTH.

PATENTED OVERHANG INNOVATION

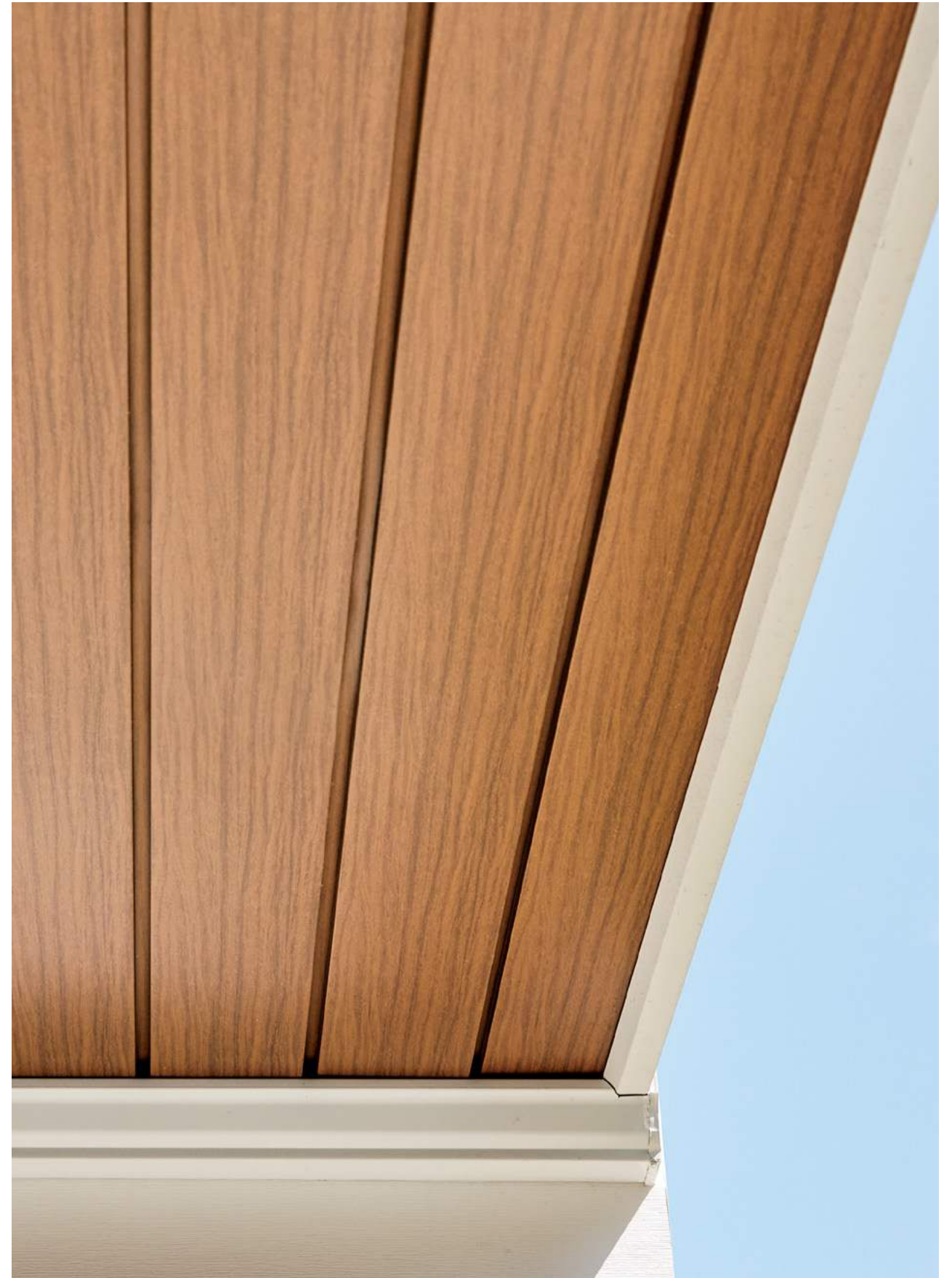
**TruVent Hidden Vent soffit from
Quality Edge, a groundbreaking
innovation in overhang design.**

As the first of its kind, TruVent ingeniously conceals the vents without compromising performance, setting a new standard in home ventilation. Since its debut, many have attempted to replicate our patented design, but none have matched the original's excellence. Our pioneering approach not only enhances the aesthetic appeal of homes but also ensures optimal airflow and protection.

INVISIBLE VENTS



NATURAL
WOODGRAIN



TRUVENT HIDDEN VENT SOFFIT IN MEDIUM TEAK

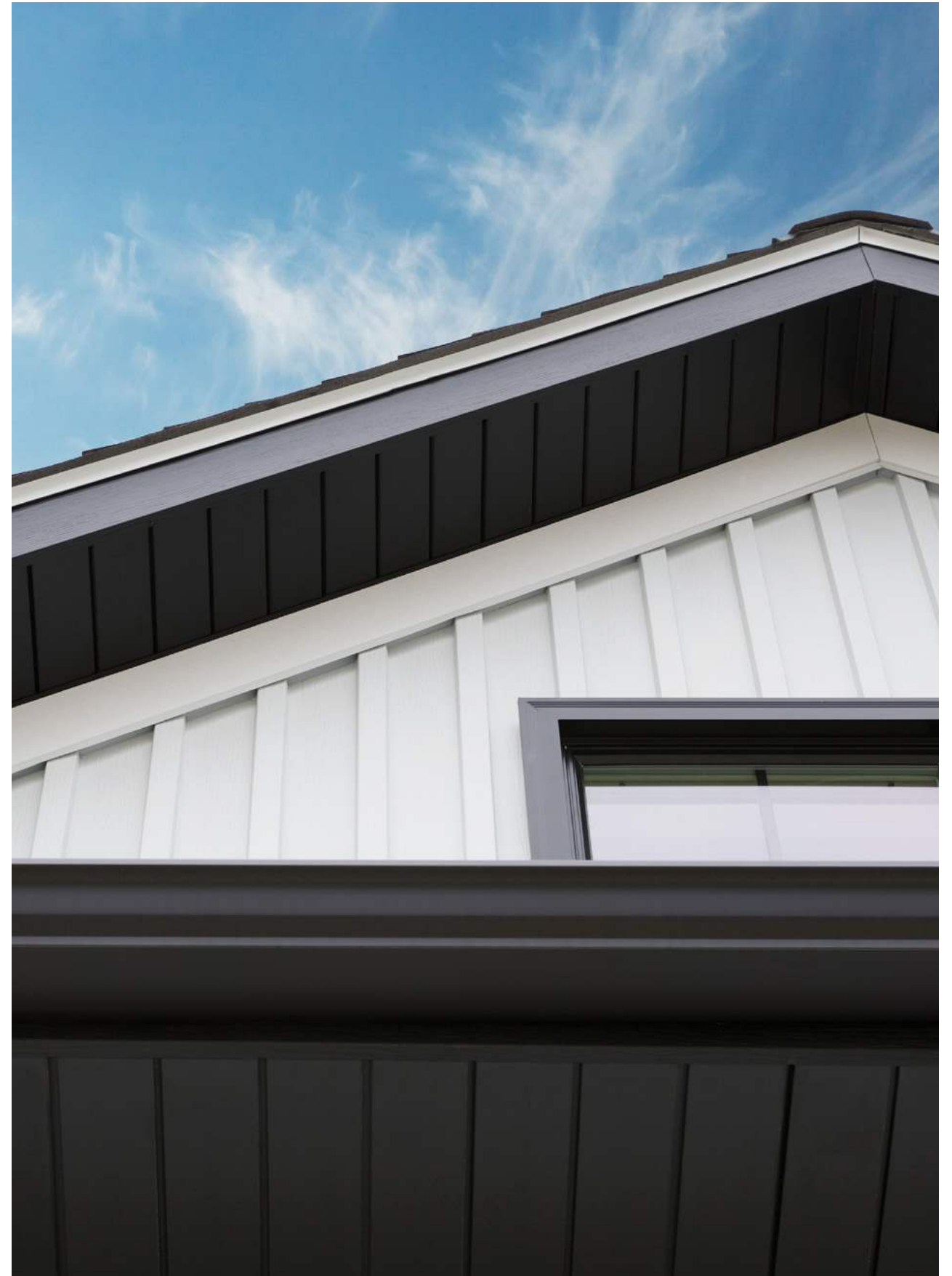
WOODGRAIN HIDDEN VENT SOFFIT

Introducing the first-of-its-kind woodgrain soffit with hidden ventilation.
TruVent hidden vent soffit features a patented design that conceals the ventilation,
making a design statement without compromising the performance.
The naturally-inspired woodgrains create a stunning design statement,
enhancing the overhangs and beauty of any home design.

ENDURING TRENDS



LASTING
STYLE

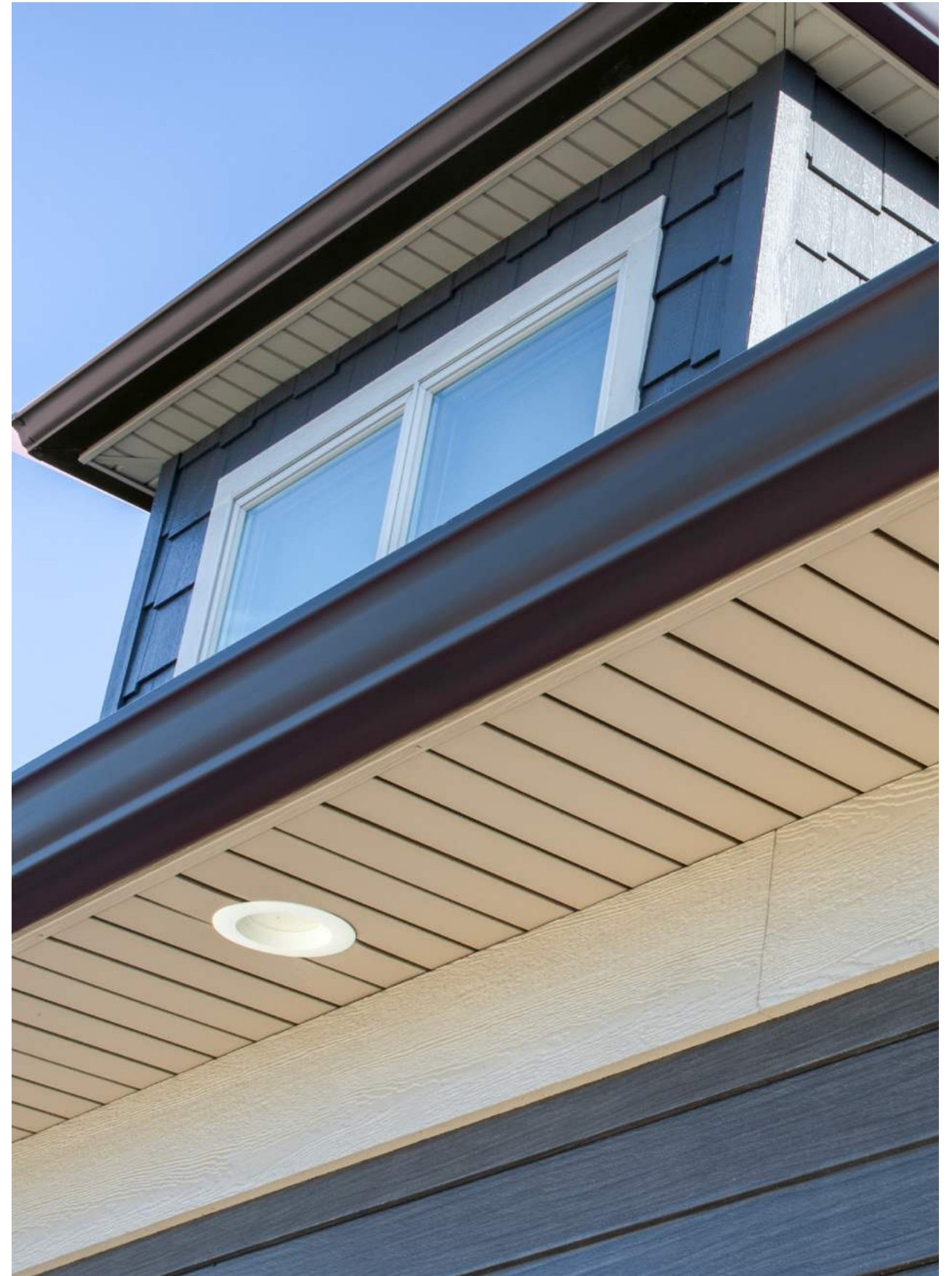


TRUVENT HIDDEN VENT SOFFIT IN BLACK

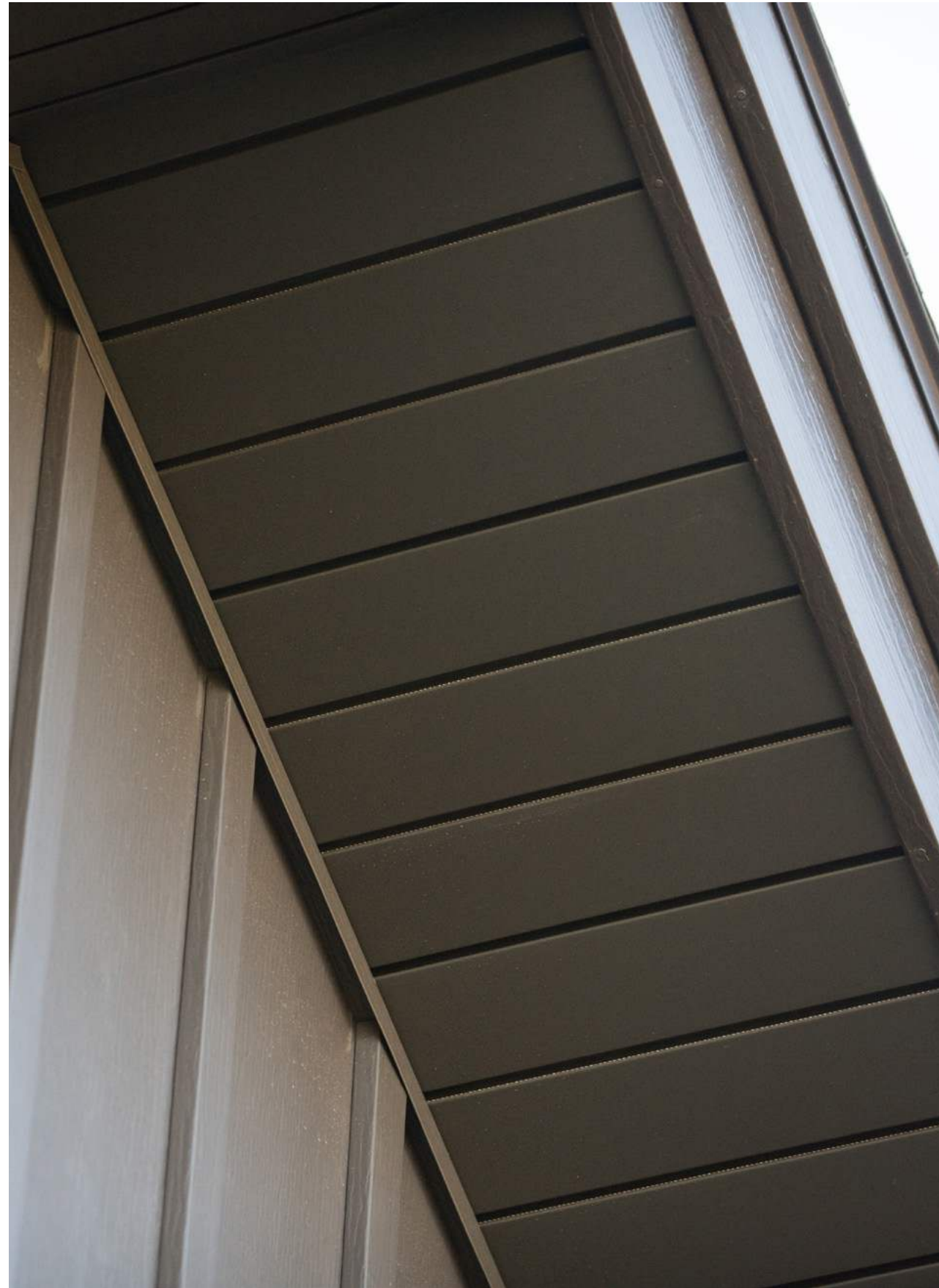


TRUVENT HIDDEN VENT SOFFIT IN BLACK





TRUVENT HIDDEN VENT SOFFIT IN DESERT TAN



TRUVENT HIDDEN VENT SOFFIT IN IRONSTONE



PROPER VENTILATION
PROLONGS THE LIFE
OF YOUR ROOF,
REDUCES ENERGY
COSTS, AND IMPROVES
INDOOR AIR QUALITY.

TRUVENT HIDDEN VENT SOFFIT IN WHITE



COLORFUL



EVOLUTION



TRUVENT HIDDEN VENT SOFFIT IN FOREST



FROM SOFT TO STRIKING

Our collection offers 27 solid colors ranging from neutrals to bold hues, along with two new woodgrain options, ensuring a broad selection to fit any home style and design. Whether you're looking to complement your siding or roofing with subtle elegance or make a bold statement with your overhang, our color options provide the perfect solution. Each shade is meticulously crafted to enhance the aesthetic appeal of your home, offering versatility and timeless beauty. Transform your home's exterior with colors that not only match but elevate your design vision.

TRUVENT PROVIDES UNRIVALED HOME VENTILATION

Proper ventilation saves homeowners up to \$18,000 over a 15-year mortgage.

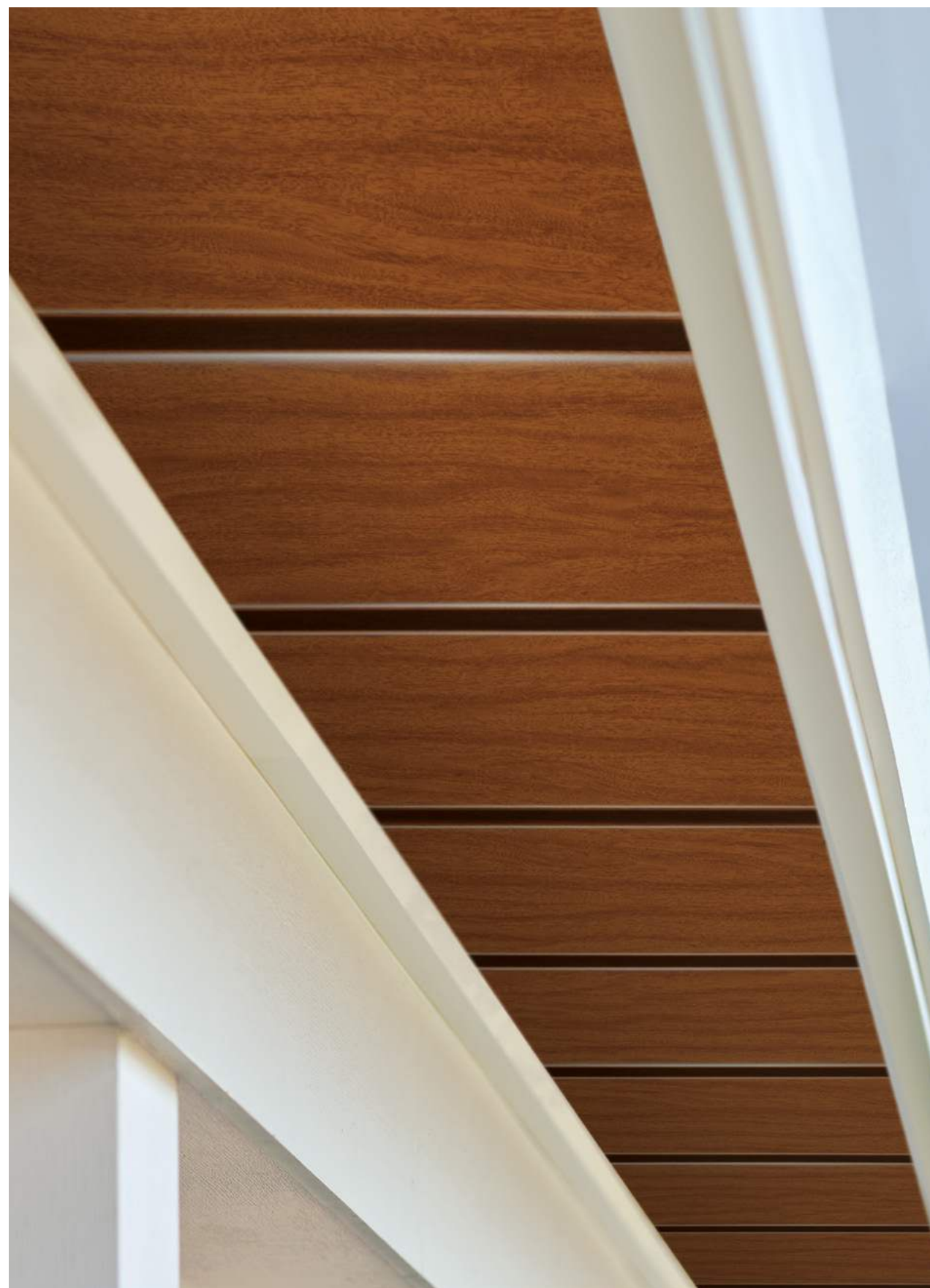
Improperly vented and overheated attics are a primary cause of premature aging of roofing materials which can be costly. The Asphalt Roofing Manufacturers Association states that "Recent research has reinforced the theory that prolonged exposure to extreme heat accelerates the aging of asphalt roofing products. By properly ventilating the underside of the roof deck, heat buildup and its related problems can be reduced." It's one of the main reasons why shingle manufacturers warranties are voided when proper ventilation is not present.

	TRUVENT (ALUMINUM)	VINYL	FIBER CEMENT	WOOD COMPOSITE
Woodgrain Color	Yes	No	No	No
Warranty	Lifetime	50 Years	30 Years	50 Years
Fade Resistant	Yes	No	No	No
Mold & Mildew Protection	Yes	No	No	No
Extreme Weather Durability	Yes	No	No	No
Maintenance Free	Yes	No	No	No
Fire Resistant	Yes	No	Yes	No

UNDERSTATED

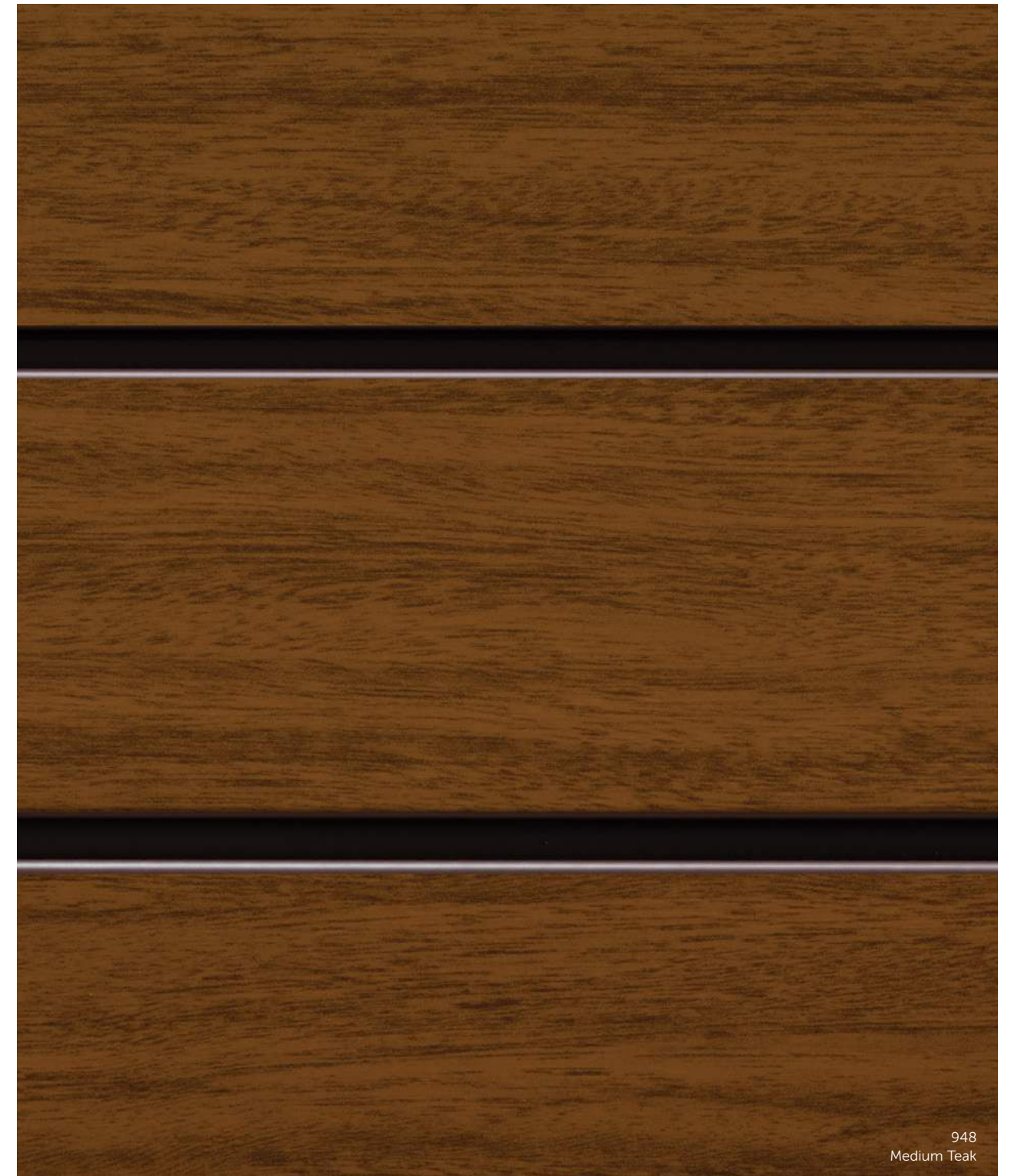
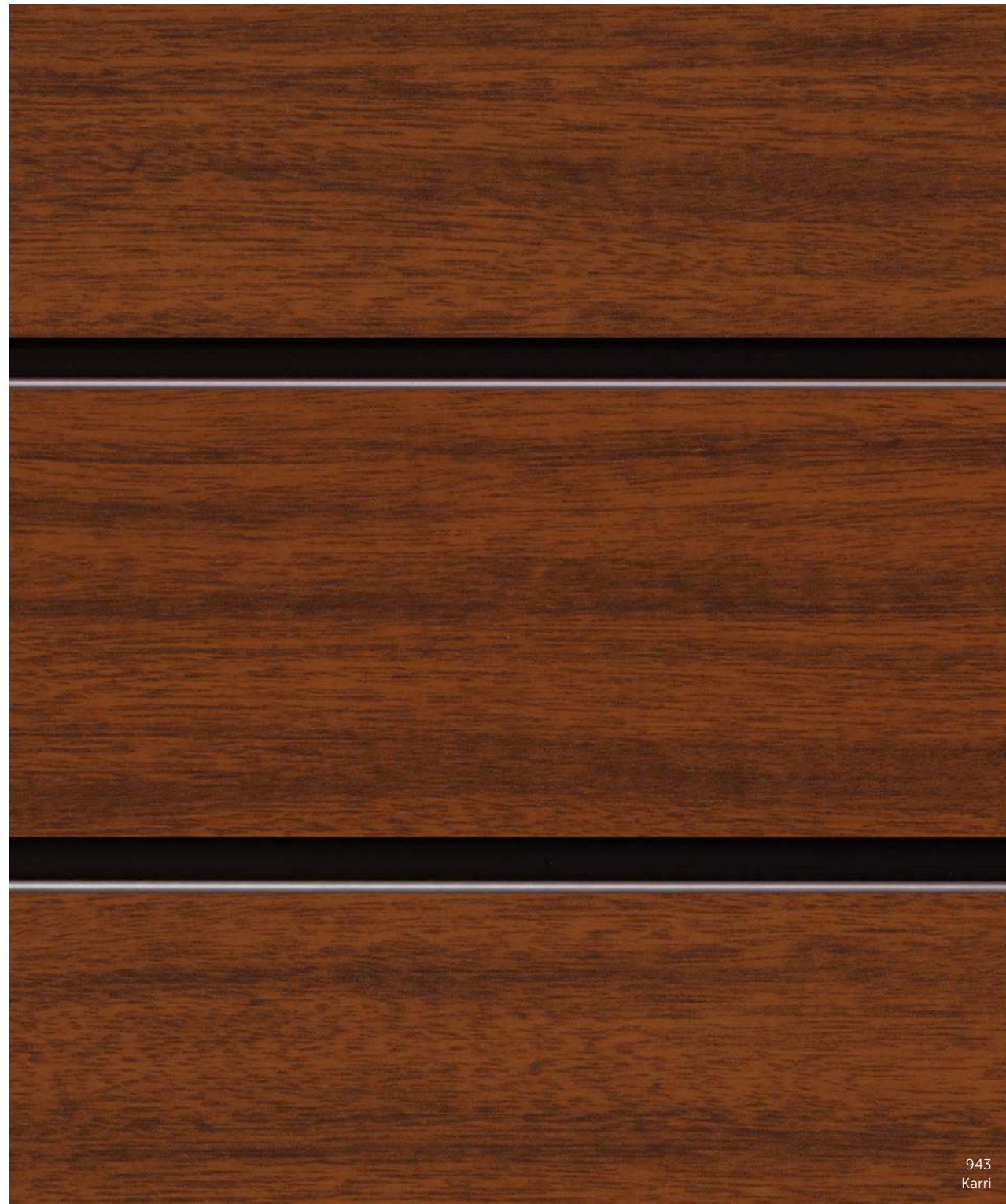


LUXURY

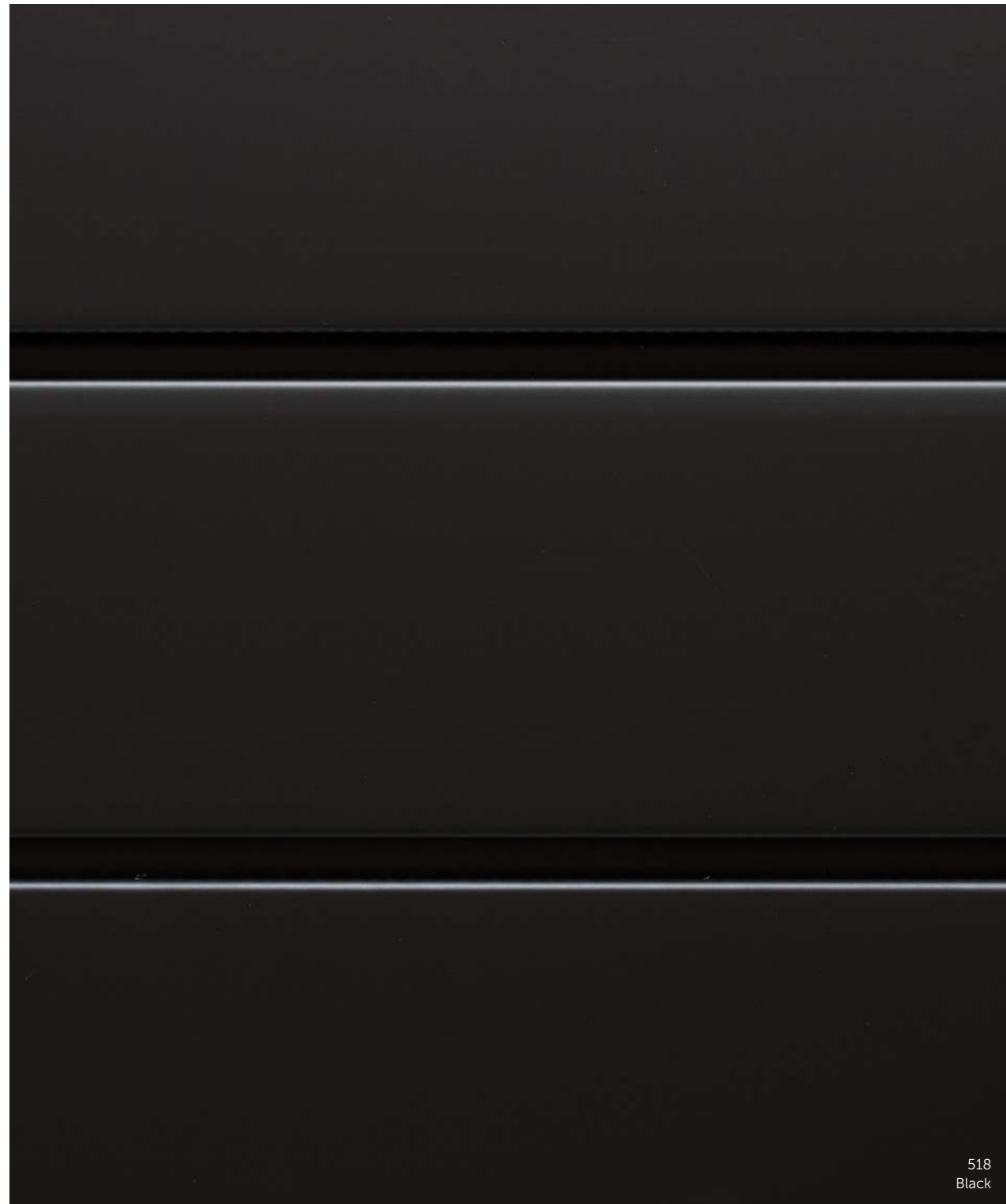


TRUVENT HIDDEN VENT SOFFIT IN MEDIUM TEAK

TRUVENT® WOODGRAIN COLORS



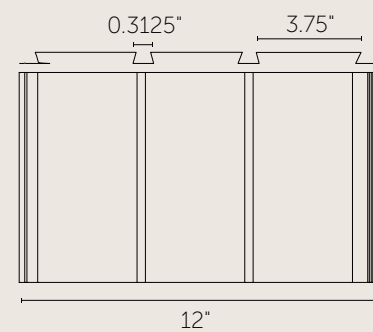
TRUVENT® SOLID COLORS





TRUVENT HIDDEN VENT SOFFIT IN BLACK

TRUVENT | SPECIFICATIONS



PRODUCT LINE

Aluminum Soffit

MATERIAL

Aluminum

THICKNESS

0.019"

DIMENSIONS

Height: 12"

Length: 12'

NFA

11.0

COATING

Q800 TuffTech™ coating is applied at 0.6–0.8 mils, a pencil hardness of F-2H (ASTM D 3363) and flexibility of 1-2T. Specular gloss 60° ASTM D 523 is ± 5% of specification.

PATENTS

U.S. Patent Nos.: 7,137,224

Canadian Patent: 2,496,496

TECHNICAL SUPPORT

Complete technical information and literature is available at: QualityEdge.com/Support

INSTALLATION SUPPORT

Installation information is available at: QualityEdge.com/Support

WARRANTY

For complete warranty information, registration and claims, visit: QualityEdge.com/Warranties

BUILDING CODES & BEST PRACTICES

"Proper ventilation [more in-take through soffit than exhaust through roof vents] can lower the attic temperature by as much as 50°F, which significantly reduces the home's heating and cooling demands. Ridge and soffit vents help keep the attic space well-ventilated, preventing a build-up of moisture and reducing heat in summer. These vents can prolong the life of the roof."

Typical one foot soffit overhangs should have at least an 11 NFA, so when used on both sides of the home will have a combined NFA of 22 to draw the air flow needed to work with a ridge vent system.

SOURCE: U.S. Department of Energy
https://web.archive.org/web/20120925234940/http://www1.eere.energy.gov/buildings/openhouse/soffit_vents.html/#



GRAND RAPIDS • DALLAS • SAVANNAH

QUALITYEDGE.COM